



Title Plan - LT 536376

Survey Number LT 536376
Surveyor Reference E19581 Rosemerryn 13
Surveyor Kevin Martin Hayes
Survey Firm Davie Lovell-Smith Ltd
Surveyor Declaration

Survey Details

Dataset Description Lots 441-473, 475-502, 706, 751, 752, 1016, 1032-1034, 2000, 7002, 7003 and 7019 being Subdivision of Lot 705 DP 525161

Status Initiated

Land District Canterbury **Survey Class** Class A

Submitted Date **Survey Approval Date**
Deposit Date

Territorial Authorities

Selwyn District

Comprised In

RT 839624

Created Parcels

Parcels	Parcel Intent	Area	RT Reference
Lot 441 Deposited Plan 536376	Fee Simple Title	0.0585 Ha	889541
Lot 442 Deposited Plan 536376	Fee Simple Title	0.0514 Ha	889542
Lot 443 Deposited Plan 536376	Fee Simple Title	0.0696 Ha	889543
Lot 444 Deposited Plan 536376	Fee Simple Title	0.0729 Ha	889544
Lot 445 Deposited Plan 536376	Fee Simple Title	0.0686 Ha	889545
Lot 446 Deposited Plan 536376	Fee Simple Title	0.0641 Ha	889546
Lot 447 Deposited Plan 536376	Fee Simple Title	0.0659 Ha	889547
Lot 448 Deposited Plan 536376	Fee Simple Title	0.0659 Ha	889548
Lot 449 Deposited Plan 536376	Fee Simple Title	0.0660 Ha	889549
Lot 450 Deposited Plan 536376	Fee Simple Title	0.0660 Ha	889550
Lot 451 Deposited Plan 536376	Fee Simple Title	0.0662 Ha	889551
Lot 452 Deposited Plan 536376	Fee Simple Title	0.0665 Ha	889552
Lot 453 Deposited Plan 536376	Fee Simple Title	0.0676 Ha	889553
Lot 454 Deposited Plan 536376	Fee Simple Title	0.0599 Ha	889554
Lot 455 Deposited Plan 536376	Fee Simple Title	0.0598 Ha	889555
Lot 456 Deposited Plan 536376	Fee Simple Title	0.0598 Ha	889556
Lot 457 Deposited Plan 536376	Fee Simple Title	0.0588 Ha	889557
Lot 458 Deposited Plan 536376	Fee Simple Title	0.0477 Ha	889558
Lot 459 Deposited Plan 536376	Fee Simple Title	0.0464 Ha	889559
Lot 460 Deposited Plan 536376	Fee Simple Title	0.0463 Ha	889560
Lot 461 Deposited Plan 536376	Fee Simple Title	0.0463 Ha	889561
Lot 462 Deposited Plan 536376	Fee Simple Title	0.0501 Ha	889562
Lot 463 Deposited Plan 536376	Fee Simple Title	0.0504 Ha	889563

Title Plan - LT 536376

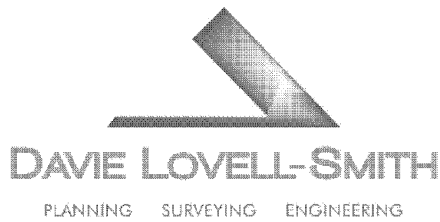
Created Parcels

Parcels	Parcel Intent	Area	RT Reference
Lot 464 Deposited Plan 536376	Fee Simple Title	0.0529 Ha	889564
Lot 465 Deposited Plan 536376	Fee Simple Title	0.0590 Ha	889565
Lot 466 Deposited Plan 536376	Fee Simple Title	0.0560 Ha	889566
Lot 467 Deposited Plan 536376	Fee Simple Title	0.0517 Ha	889567
Lot 468 Deposited Plan 536376	Fee Simple Title	0.0504 Ha	889568
Lot 469 Deposited Plan 536376	Fee Simple Title	0.0520 Ha	889569
Lot 470 Deposited Plan 536376	Fee Simple Title	0.0577 Ha	889570
Lot 471 Deposited Plan 536376	Fee Simple Title	0.0898 Ha	889571
Lot 472 Deposited Plan 536376	Fee Simple Title	0.0566 Ha	889572
Lot 473 Deposited Plan 536376	Fee Simple Title	0.0497 Ha	889573
Lot 475 Deposited Plan 536376	Fee Simple Title	0.0479 Ha	889574
Lot 476 Deposited Plan 536376	Fee Simple Title	0.0537 Ha	889575
Lot 477 Deposited Plan 536376	Fee Simple Title	0.0585 Ha	889576
Lot 478 Deposited Plan 536376	Fee Simple Title	0.0585 Ha	889577
Lot 479 Deposited Plan 536376	Fee Simple Title	0.0585 Ha	889578
Lot 480 Deposited Plan 536376	Fee Simple Title	0.0585 Ha	889579
Lot 481 Deposited Plan 536376	Fee Simple Title	0.0748 Ha	889580
Lot 482 Deposited Plan 536376	Fee Simple Title	0.0661 Ha	889581
Lot 483 Deposited Plan 536376	Fee Simple Title	0.0608 Ha	889582
Lot 484 Deposited Plan 536376	Fee Simple Title	0.0575 Ha	889583
Lot 485 Deposited Plan 536376	Fee Simple Title	0.0617 Ha	889584
Lot 486 Deposited Plan 536376	Fee Simple Title	0.0593 Ha	889585
Lot 487 Deposited Plan 536376	Fee Simple Title	0.0716 Ha	889586
Lot 488 Deposited Plan 536376	Fee Simple Title	0.0654 Ha	889587
Lot 489 Deposited Plan 536376	Fee Simple Title	0.0634 Ha	889588
Lot 490 Deposited Plan 536376	Fee Simple Title	0.0638 Ha	889589
Lot 491 Deposited Plan 536376	Fee Simple Title	0.0729 Ha	889590
Lot 492 Deposited Plan 536376	Fee Simple Title	0.0617 Ha	889591
Lot 493 Deposited Plan 536376	Fee Simple Title	0.0617 Ha	889592
Lot 494 Deposited Plan 536376	Fee Simple Title	0.0885 Ha	889593
Lot 495 Deposited Plan 536376	Fee Simple Title	0.0631 Ha	889594
Lot 496 Deposited Plan 536376	Fee Simple Title	0.0618 Ha	889595
Lot 497 Deposited Plan 536376	Fee Simple Title	0.0509 Ha	889596
Lot 498 Deposited Plan 536376	Fee Simple Title	0.0509 Ha	889597
Lot 499 Deposited Plan 536376	Fee Simple Title	0.0493 Ha	889598
Lot 500 Deposited Plan 536376	Fee Simple Title	0.0455 Ha	889599
Lot 501 Deposited Plan 536376	Fee Simple Title	0.0455 Ha	889600
Lot 502 Deposited Plan 536376	Fee Simple Title	0.0455 Ha	889601
Lot 706 Deposited Plan 536376	Fee Simple Title	48.2662 Ha	889602
Lot 751 Deposited Plan 536376	Fee Simple Title	0.0006 Ha	889603
Lot 752 Deposited Plan 536376	Fee Simple Title	0.0005 Ha	889604
Lot 1016 Deposited Plan 536376	Vesting on Deposit for Local Purpose Reserve Easement	0.0232 Ha	889605
Area A Deposited Plan 536376			

Title Plan - LT 536376

Created Parcels

Parcels	Parcel Intent	Area	RT Reference
Area B Deposited Plan 536376	Easement		
Area C Deposited Plan 536376	Easement		
Area D Deposited Plan 536376	Easement		
Area E Deposited Plan 536376	Easement		
Area F Deposited Plan 536376	Easement		
Area I Deposited Plan 536376	Easement		
Area J Deposited Plan 536376	Easement		
Area K Deposited Plan 536376	Easement		
Area N Deposited Plan 536376	Easement		
Area Q Deposited Plan 536376	Easement		
Area R Deposited Plan 536376	Easement		
Area S Deposited Plan 536376	Easement		
Lot 1032 Deposited Plan 536376	Vesting on Deposit for Local Purpose Reserve	0.0469 Ha	889606
Lot 1033 Deposited Plan 536376	Vesting on Deposit for Recreation Reserve (Territorial Authority)	0.0663 Ha	889607
Lot 1034 Deposited Plan 536376	Vesting on Deposit for Recreation Reserve (Territorial Authority)	0.3761 Ha	889608
Lot 2000 Deposited Plan 536376	Fee Simple Title	0.3634 Ha	889609
Lot 7002 Deposited Plan 536376	Vesting on Deposit for Road	1.0410 Ha	
Lot 7003 Deposited Plan 536376	Vesting on Deposit for Road	0.1461 Ha	
Lot 7019 Deposited Plan 536376	Vesting on Deposit for Road	0.5400 Ha	
Area G Deposited Plan 536376	Easement		
Total Area		<hr/> 54.4981 Ha	



Davie, Lovell-Smith Ltd
116 Wrights Road,
PO Box 679, Christchurch 1,
New Zealand
Telephone (03) 379-0793,
E-mail: office@dls.co.nz

Our Ref: E19581 Rosemerryn 13

D.P.536376

MEMORANDUM OF EASEMENTS

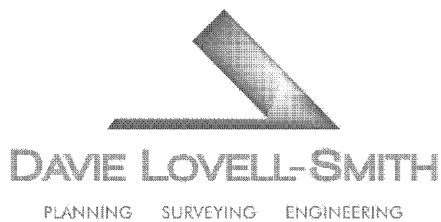
Purpose	Servient Tenement (Burdened Land)	Shown	Dominant Tenement (Benefited Land)
Right of way, rights to drain water & sewage and rights to convey water, gas, electricity & telecommunications.	Lot 472 Lot 471	A B	Lot 471 Lot 472

SCHEDULE OF EASEMENTS IN GROSS

Purpose	Servient Tenement (Burdened Land)	Shown	Grantee
Right to convey telecommunications in gross.	Lot 465 Lot 472 Lot 471	C A B	Enable Networks Limited
Right to drain water in gross.	Lot 1034	D	Selwyn District Council
Right to drain sewage in gross.	Lot 706	E, F, G, I, J & K	Selwyn District Council
Right to convey water in gross.	Lot 706	E, I, J & N	Selwyn District Council
Right to convey electricity in gross.	Lot 706	I, J & N	Orion New Zealand Limited

SCHEDULE OF EXISTING EASEMENTS

Purpose	Servient Tenement (Burdened Land)	Shown	Document
Right to drain water in gross.	Lot 706	S	EI 9370643.10
Right of way and right to convey electricity.	Lot 706	Q	EI 10715212.6



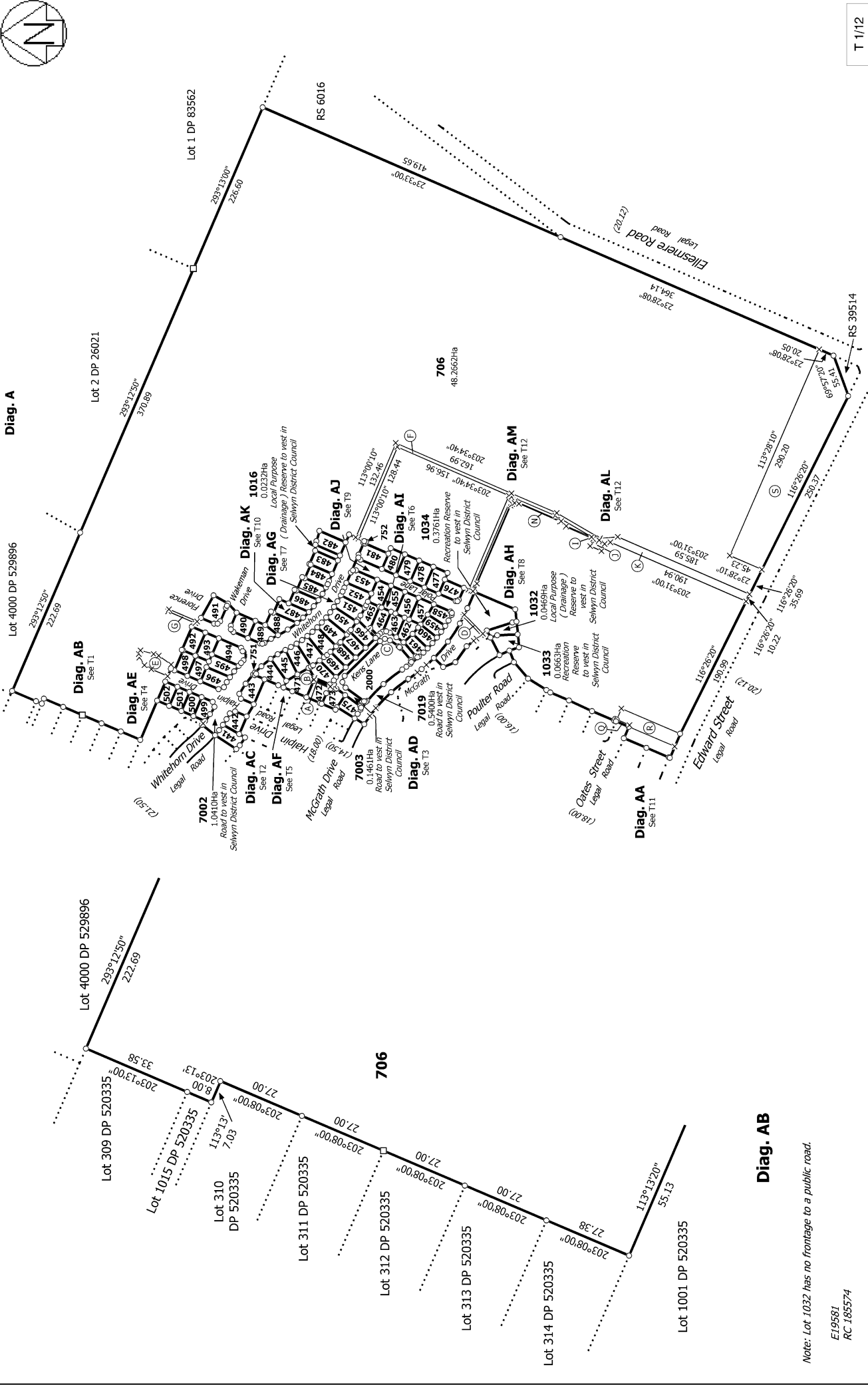
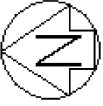
Davie, Lovell-Smith Ltd
116 Wrights Road,
PO Box 679, Christchurch 1,
New Zealand
Telephone (03) 379-0793,
E-mail: office@dls.co.nz

Our Ref: E19581 Rosemerryn 13

D.P.536376

SCHEDULE OF EXISTING EASEMENTS

Purpose	Servient Tenement (Burdened Land)	Shown	Document
Right to drain water in gross.	Lot 706	Q & R	EI 10715212.7
Right to convey electricity in gross.	Lot 706	Q	EI 10715212.9



T 1/12

Land District: Canterbury
 Digitally Generated Plan
 Generated on: 31/05/2019 4:17pm Page 6 of 17

Surveyor: Kevin Martin Hayes
 Firm: Davie Lovell-Smith Ltd

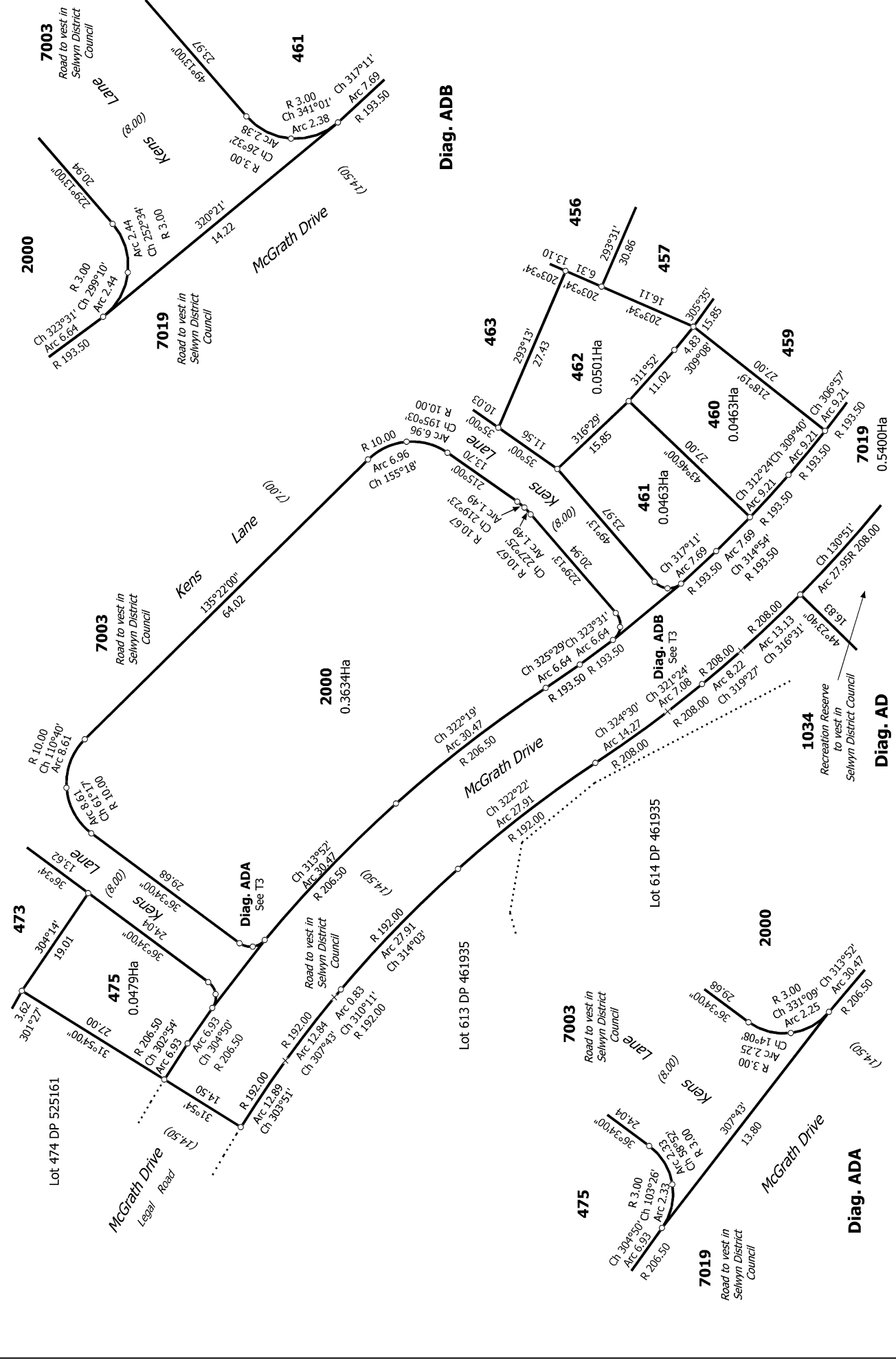
Lots 441-473, 475-502, 706, 751, 752, 1016, 1032-1034, 2000, 7002, 7003 and 7019 being Subdivision of Lot 705 DP 525161

Title Plan
 LT 536376
 DRAFT

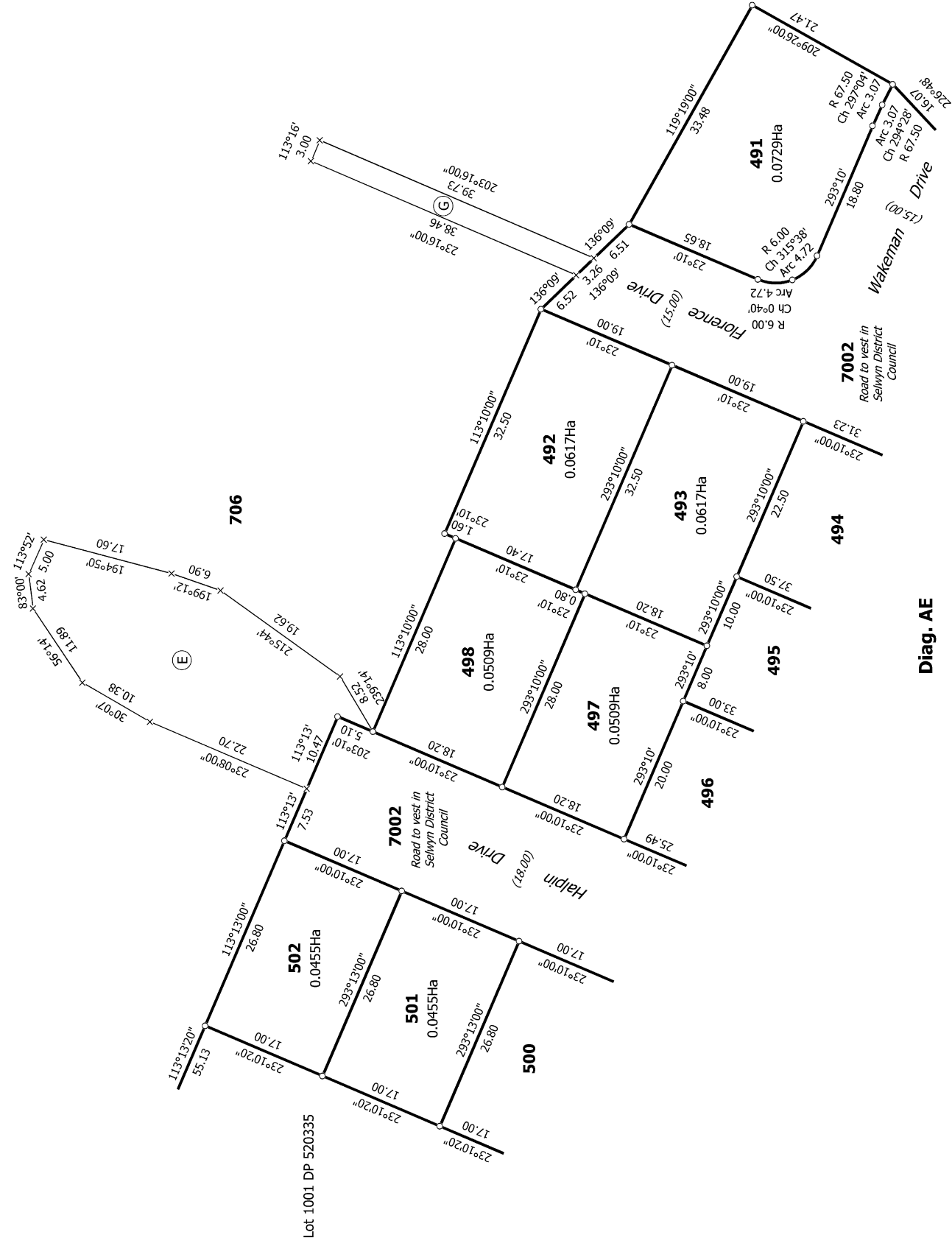
Note: Lot 1032 has no frontage to a public road.

E19581
 RC 185574

Diag. AB



T 3/12



Diag. AE

T 4/12

Land District: Canterbury

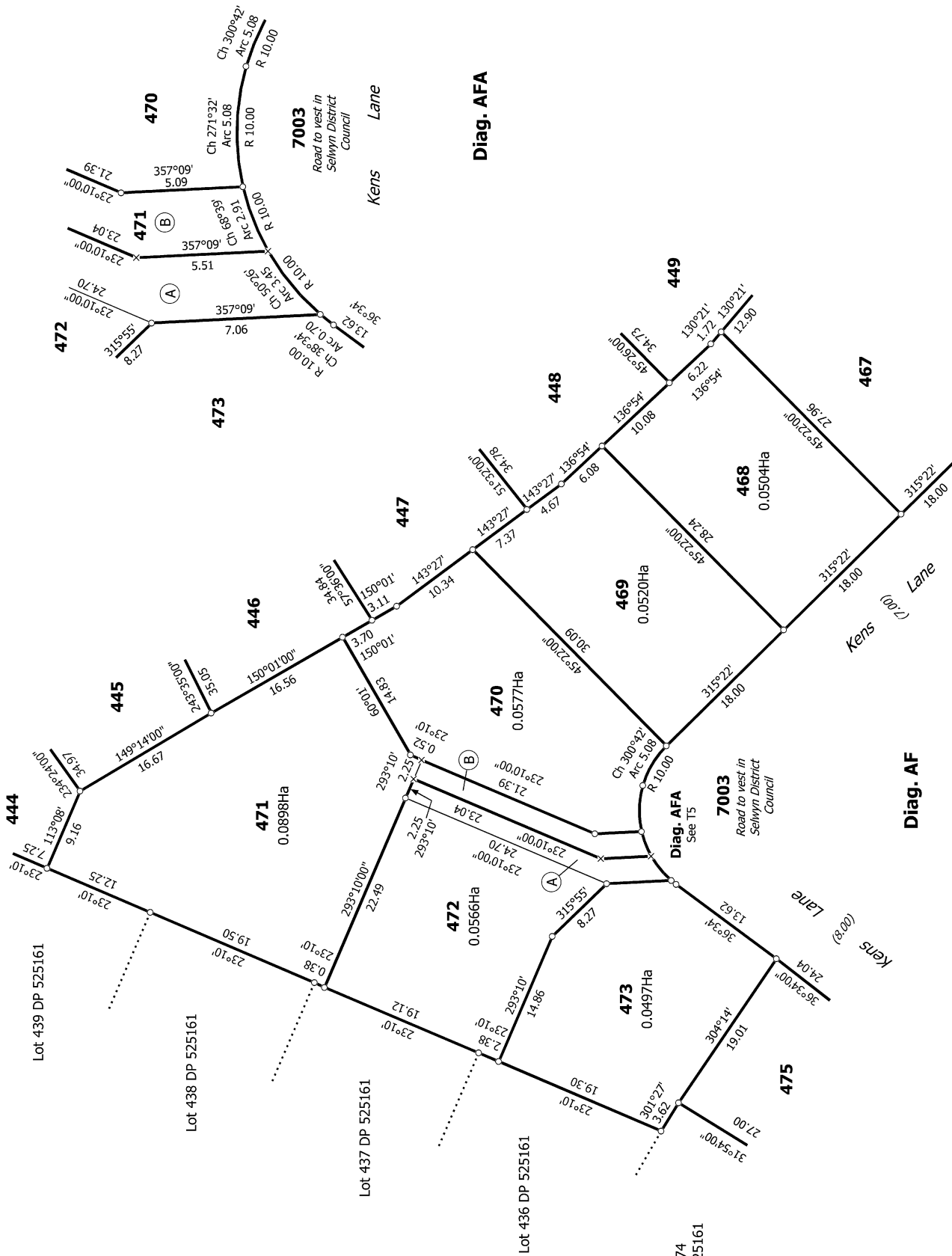
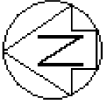
Digitally Generated Plan

Generated on: 31/05/2019 4:17pm Page 9 of 17

Lots 441-473, 475-502, 706, 751, 752, 1016, 1032-1034, 2000, 7002, 7003 and 7019 being Subdivision of Lot 705 DP 525161

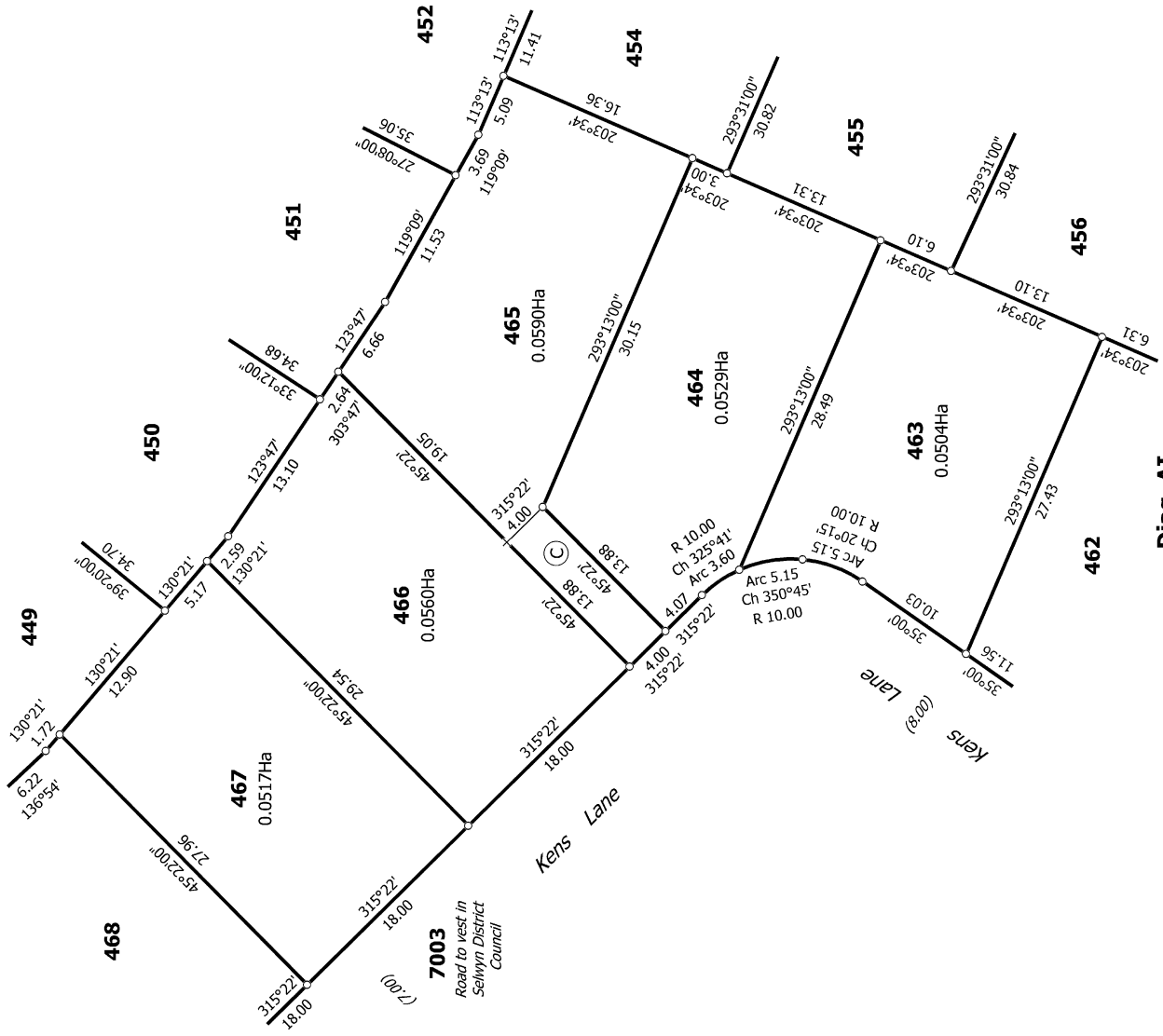
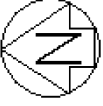
Surveyor: Kevin Martin Hayes
Firm: Davie Lovell-Smith Ltd

Title Plan
LT 536376
DRAFT



T 5/12

<p>Land District: Canterbury</p> <p>Digitally Generated Plan</p> <p>Generated on: 31/05/2019 4:17pm Page 10 of 17</p>	<p>Lots 441-473, 475-502, 706, 751, 752, 1016, 1032-1034, 2000, 7002, 7003 and 7019 being Subdivision of Lot 705 DP 525161</p>	<p>Surveyor: Kevin Martin Hayes Firm: Davie Lovell-Smith Ltd</p>	<p>Title Plan LT 536376 DRAFT</p>
--	--	--	---



Diag. A1

T 6/12

Land District: Canterbury

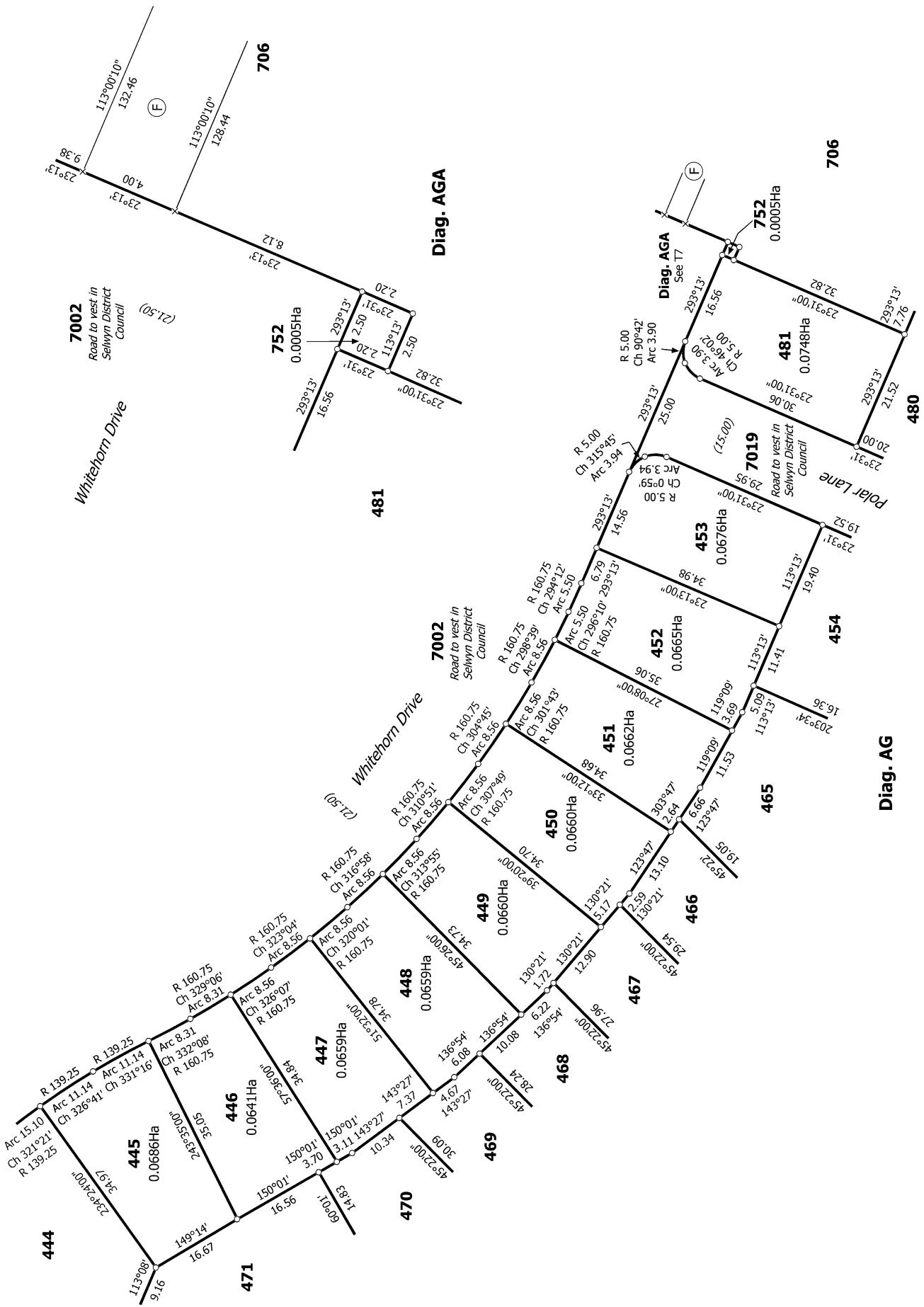
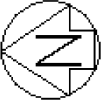
Digitally Generated Plan

Generated on: 31/05/2019 4:17pm Page 11 of 17

Lots 441-473, 475-502, 706, 751, 752, 1016, 1032-1034, 2000, 7002, 7003 and 7019 being Subdivision of Lot 705 DP 525161

Surveyor: Kevin Martin Hayes
Firm: Davie Lovell-Smith Ltd

Title Plan
LT 536376
DRAFT



T 7/12

Land District: Canterbury

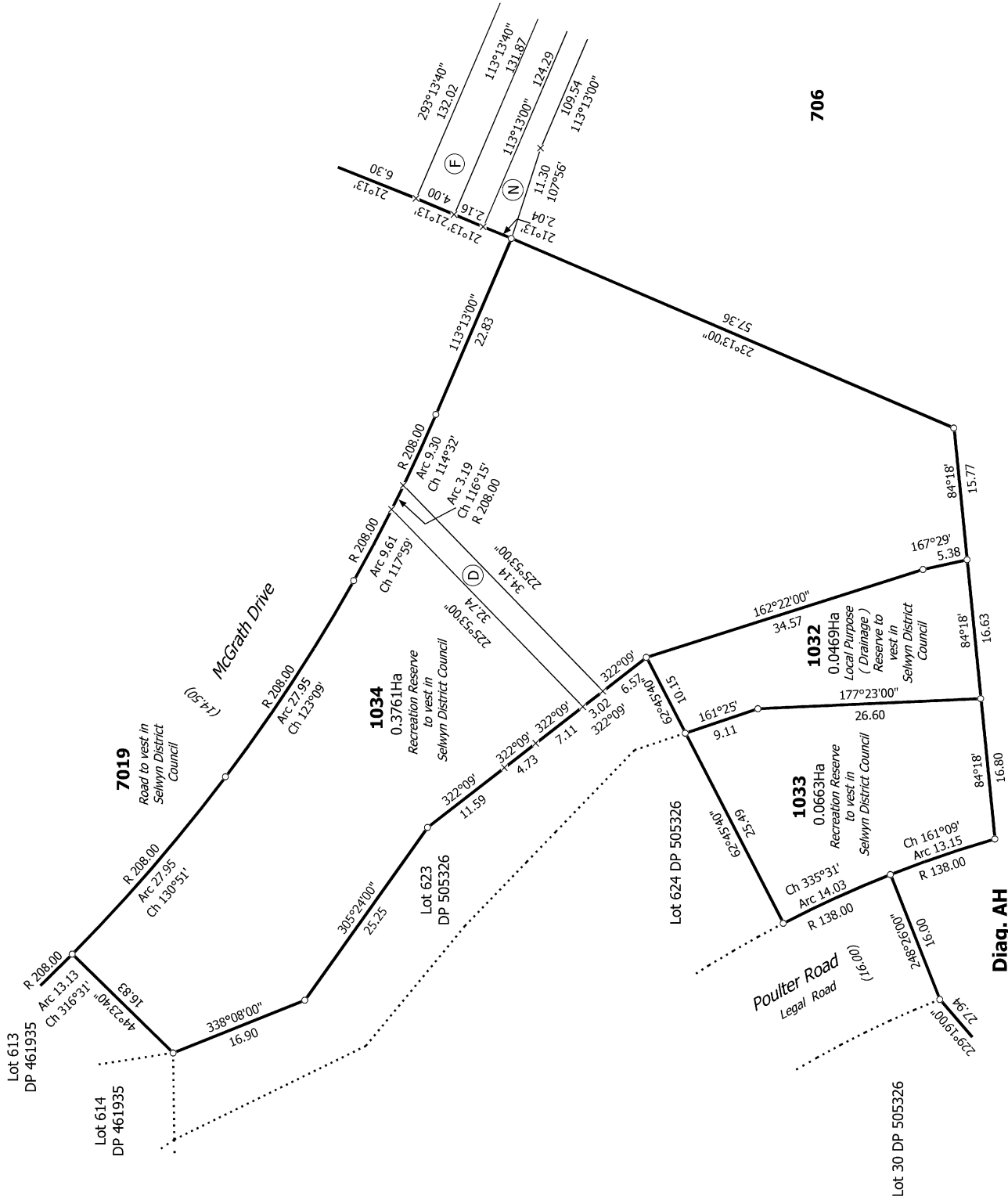
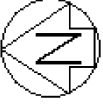
Digitally Generated Plan

Generated on: 31/05/2019 4:17pm Page 12 of 17

Lots 441-473, 475-502, 706, 751, 752, 1016, 1032-1034, 2000, 7002, 7003 and 7019 being Subdivision of Lot 705 DP 525161

Surveyor: Kevin Martin Hayes
Firm: Davie Lovell-Smith Ltd

Title Plan
LT 536376
DRAFT



T 8/12

Land District: Canterbury

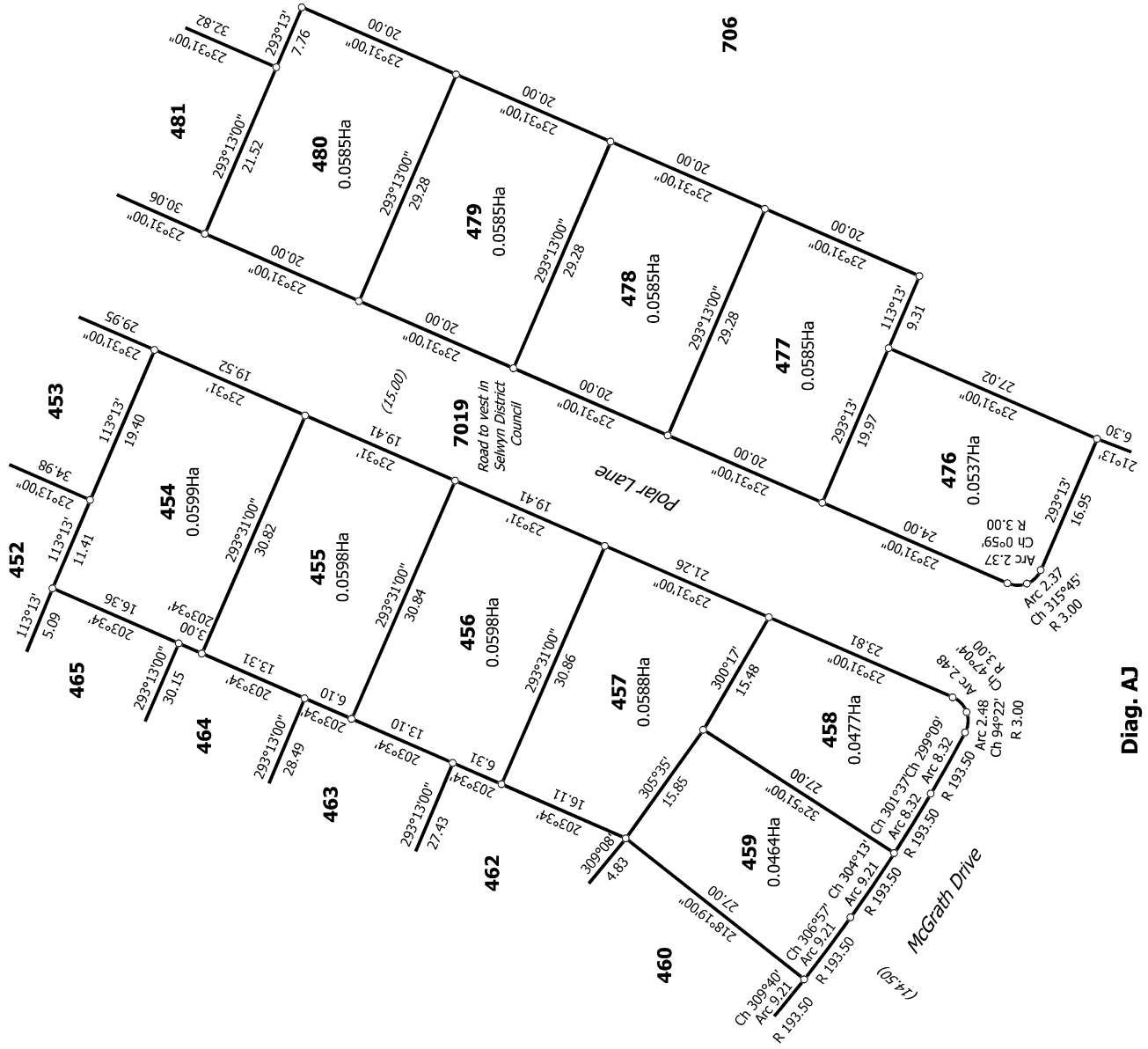
Digitally Generated Plan

Generated on: 31/05/2019 4:17pm Page 13 of 17

Diag. AH
 Lots 441-473, 475-502, 706, 751, 752, 1016, 1032-1034, 2000, 7002, 7003 and 7019 being Subdivision of Lot 705 DP 525161

Surveyor: Kevin Martin Hayes
 Firm: Davie Lovell-Smith Ltd

Title Plan
 LT 536376
 DRAFT



Diag. AJ

T 9/12

Land District: Canterbury

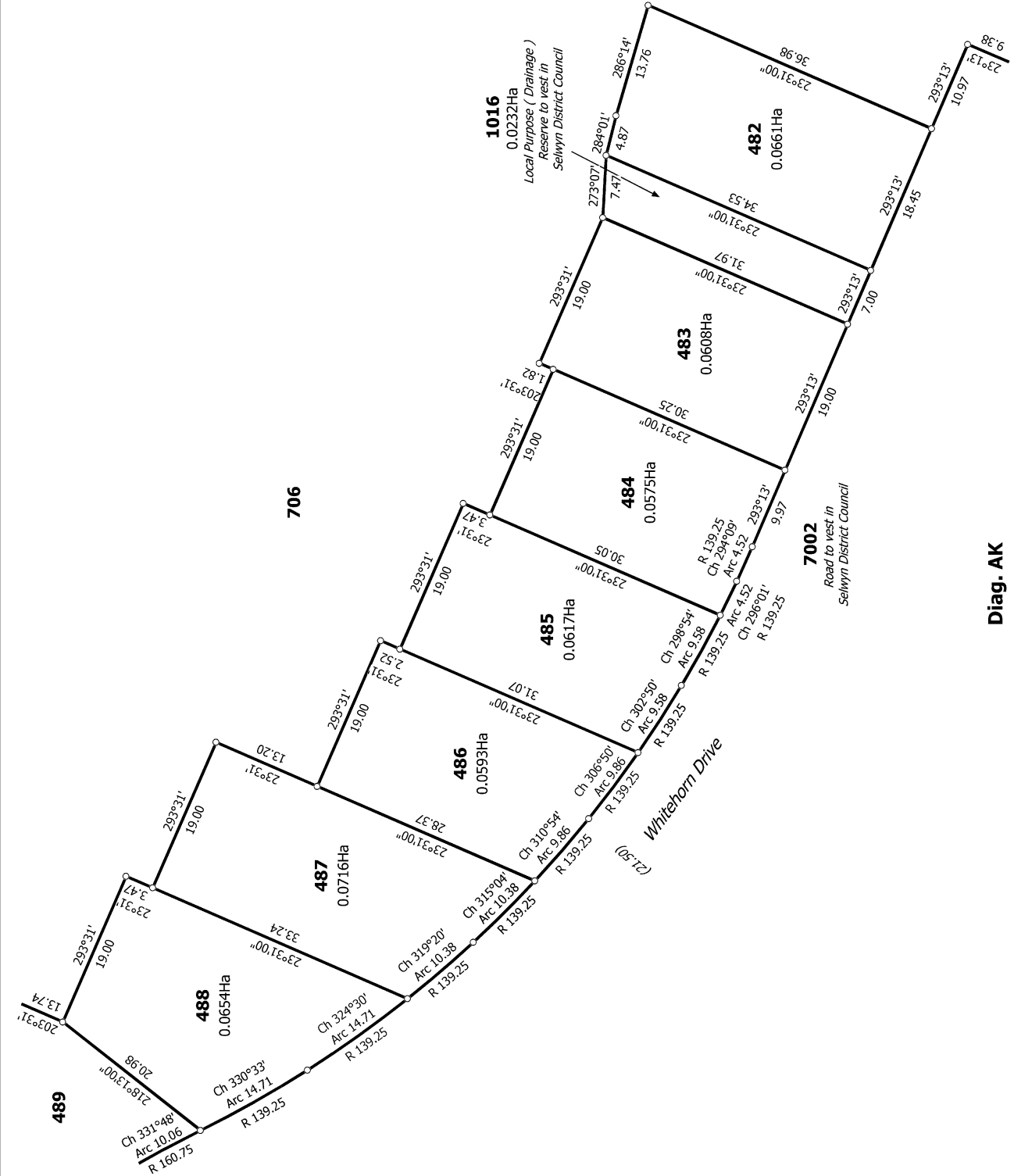
Digitally Generated Plan

Generated on: 31/05/2019 4:17pm Page 14 of 17

Lots 441-473, 475-502, 706, 751, 752, 1016, 1032-1034, 2000, 7002, 7003 and 7019 being Subdivision of Lot 705 DP 525161

Surveyor: Kevin Martin Hayes
Firm: Davie Lovell-Smith Ltd

Title Plan
LT 536376
DRAFT

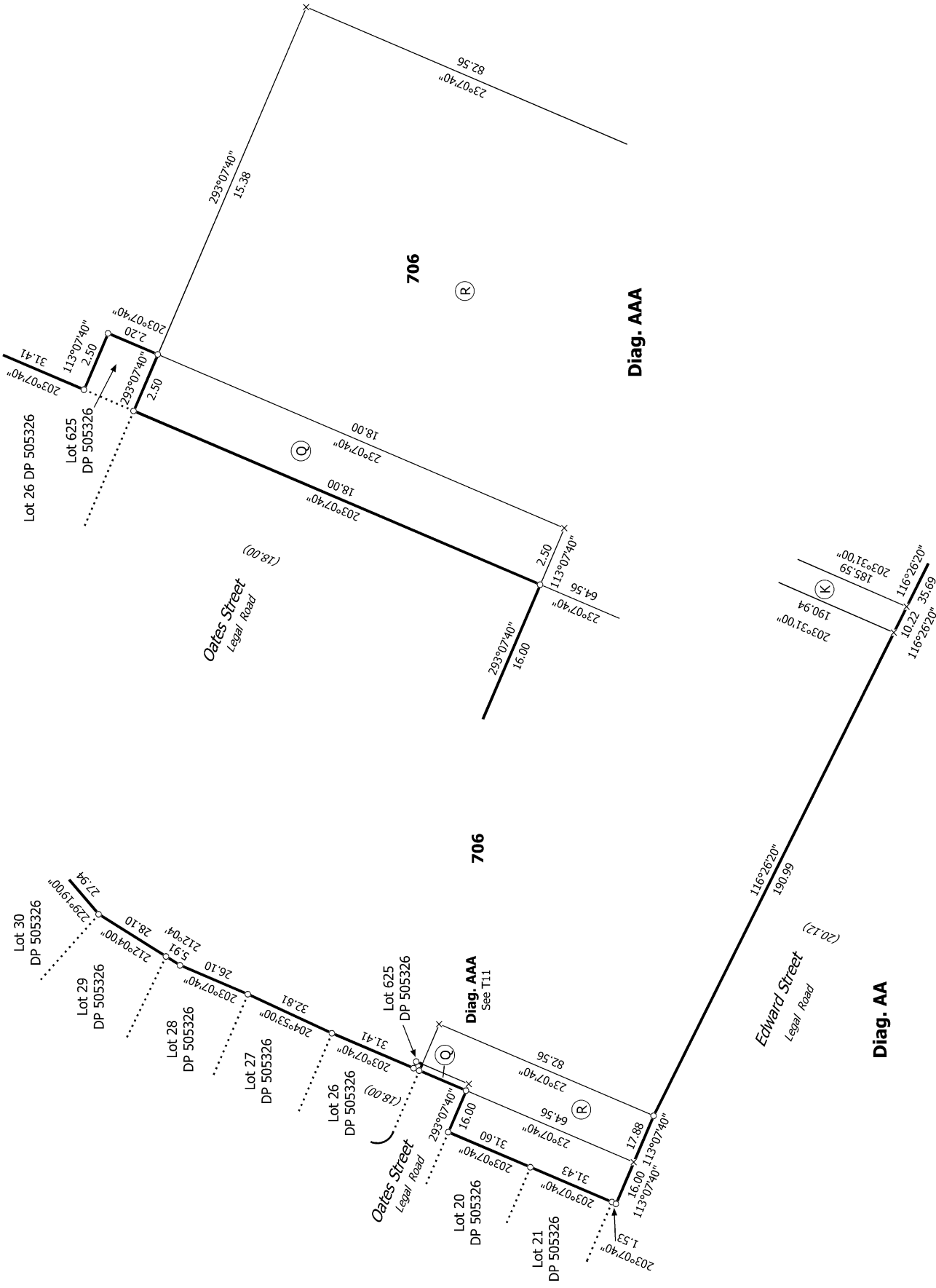


Diag. AK

T 10/12

Lots 441-473, 475-502, 706, 751, 752, 1016, 1032-1034, 2000, 7002, 7003 and 7019 being Subdivision of Lot 705 DP 525161

Surveyor: Kevin Martin Hayes
 Firm: Davie Lovell-Smith Ltd



T 11/12

Title Plan
LT 536376
DRAFT

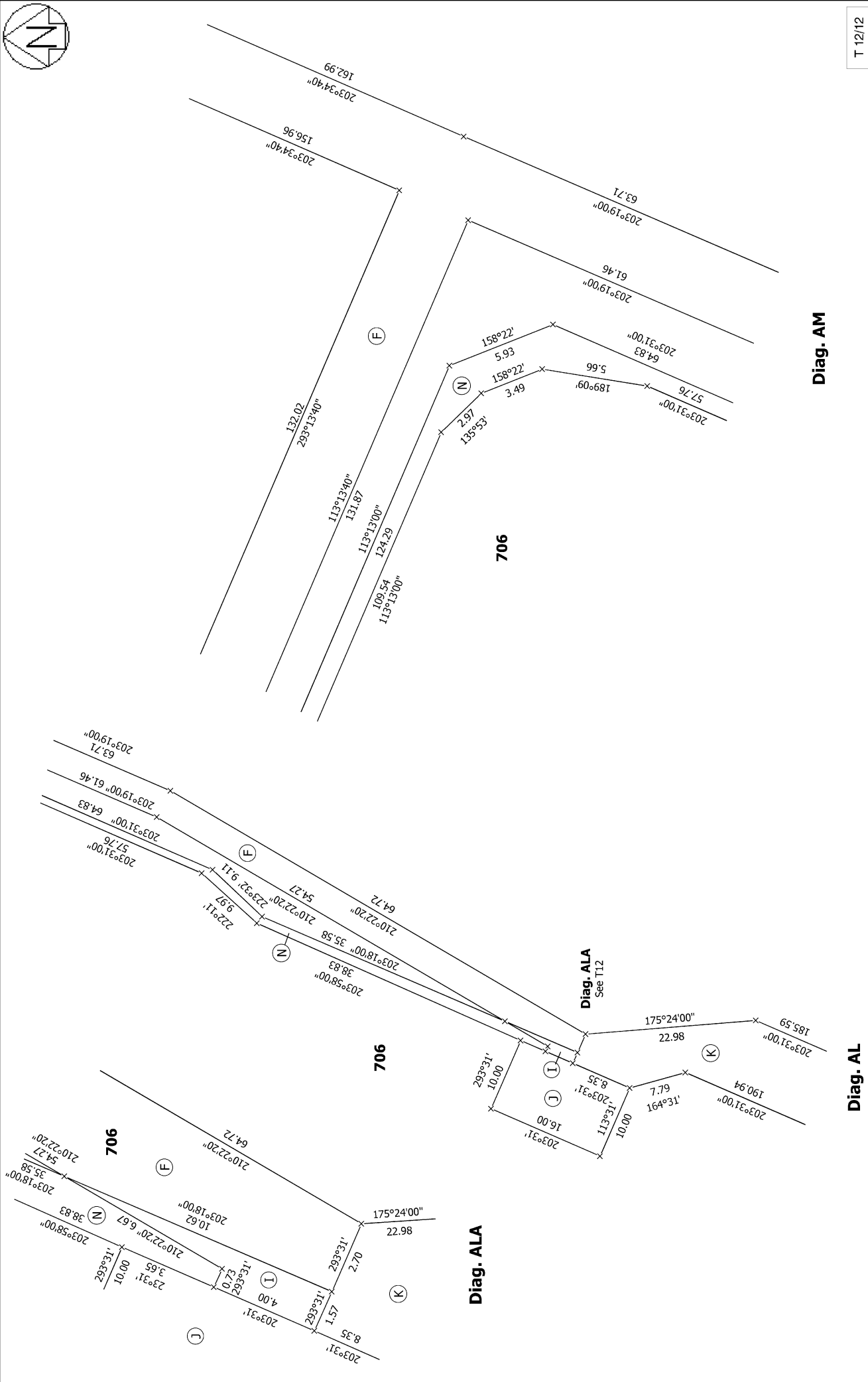
Surveyor: Kevin Martin Hayes
Firm: Davie Lovell-Smith Ltd

Lots 441-473, 475-502, 706, 751, 752, 1016, 1032-1034, 2000, 7002, 7003 and
7019 being Subdivision of Lot 705 DP 525161

Land District: Canterbury

Digitally Generated Plan

Generated on: 31/05/2019 4:17pm Page 16 of 17



T 12/12

Diag. AM

Diag. AL

<p>Land District: Canterbury</p> <p>Digitally Generated Plan</p> <p>Generated on: 31/05/2019 4:17pm Page 17 of 17</p>	<p>Surveyor: Kevin Martin Hayes</p> <p>Firm: Davie Lovell-Smith Ltd</p>	<p>Title Plan</p> <p>LT 536376</p> <p>DRAFT</p>	<p>Lots 441-473, 475-502, 706, 751, 752, 1016, 1032-1034, 2000, 7002, 7003 and 7019 being Subdivision of Lot 705 DP 525161</p>
--	---	---	--